

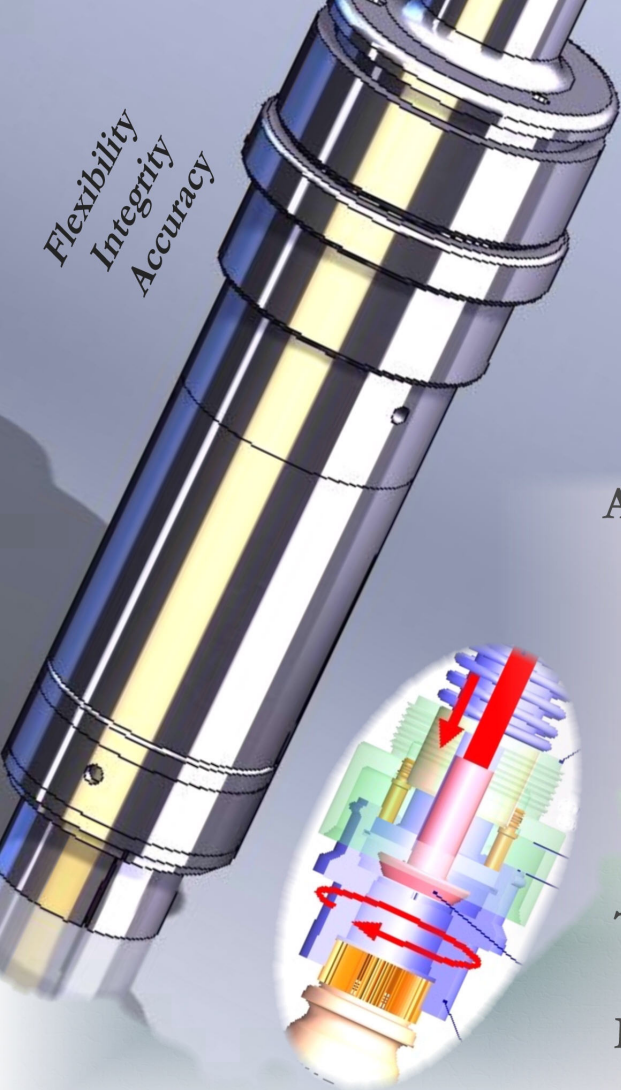
# RC-Capping Turrets

U.S. Bottlers  
Machinery Co

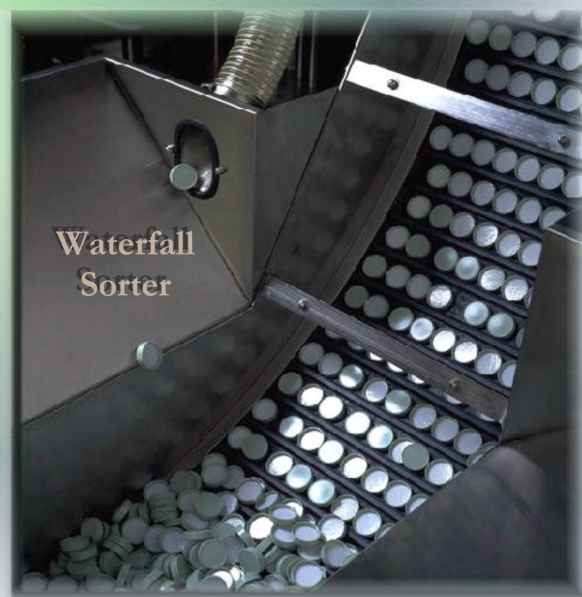
U.S.







Aerosol Overcaps  
 ROPP Caps  
 Plugs  
 Inserts  
 Fitments  
 Straws  
 Brushes  
 Sport Caps  
 Tamper Evident  
 Flip Top  
 Metallic Overlay  
 Snap Caps



## Affordable Yet Customized Rotary Reliability

- Magnetic clutch torque control for repeatability and tight tolerance control, without cogging.

- Positive bottle to chuck shaft alignment, helps reduce potential for cocked caps common in straightline designs

- Heavy duty corrosive resistant materials, including plastic style optional construction for chemical applications.

- Hi-torque options up to 135 "/lbs. Cap sizes up to 110 mm. Container sizes up to 6 liters.

- Complete top of the line PLC electrical controls included.

- Many sorting options including waterfall, vibratory or centrifugal systems.

- Custom designs for unique caps such as mascara brushes, pump dispensers, and straw inserts.

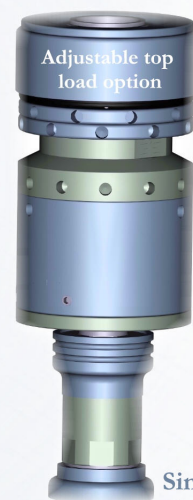
- Single piece or articulated jaws. Serrated or replaceable liner inserts. Pneumatic or mechanical chucks.

- Independent spindle control and adjustable top load option available on most 22" capper models.

- Engineered for minimal maintenance and long lasting service. Designed, built, and serviced from USB, in the USA.

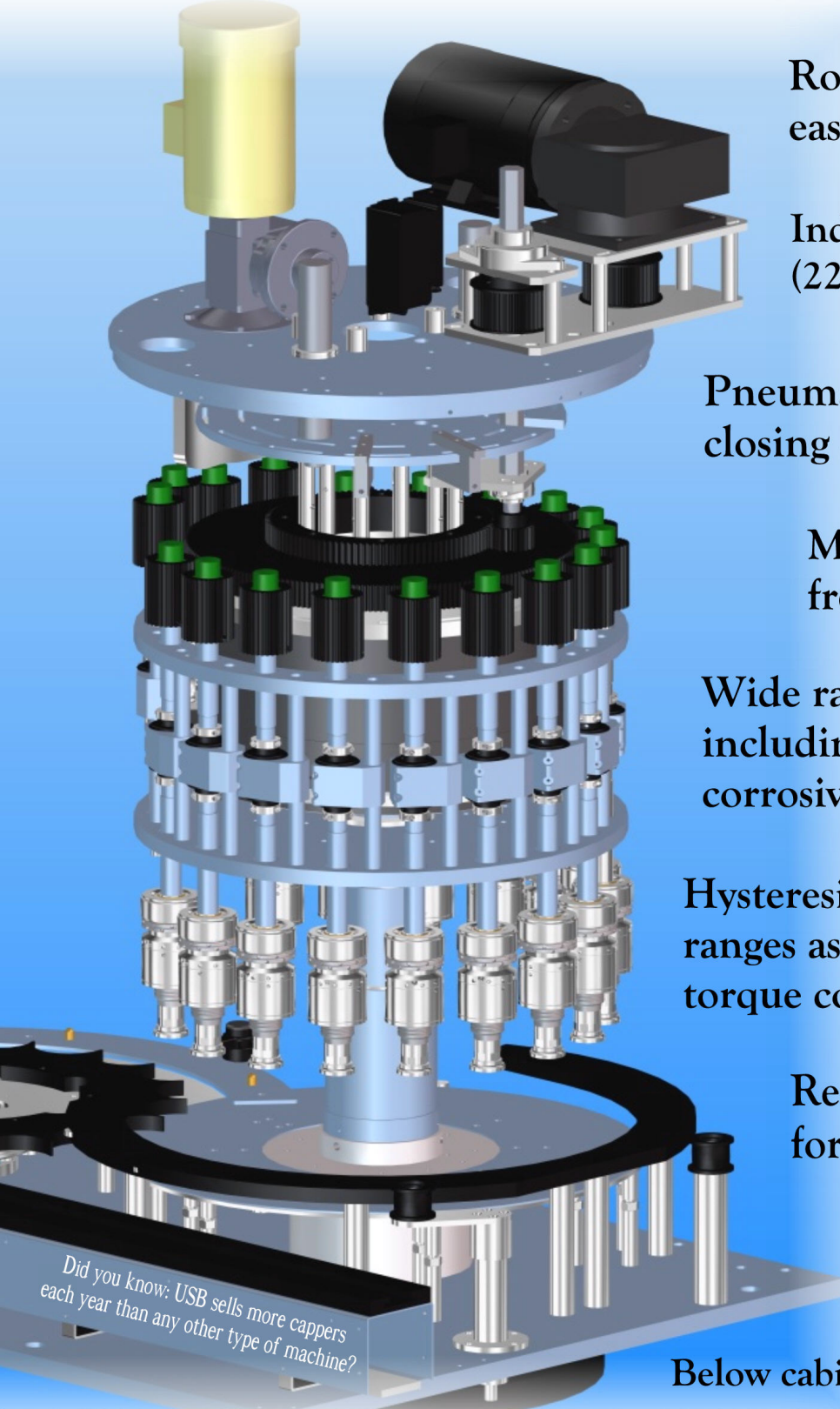


Vibratory Sorter



Single Piece Jaw





Roof mounted lift jack for easy adjustment and access.

Independent spindle control (22" PD and larger)

Pneumatic or mechanical closing chuck options.

Monoblock, tangential or free-standing models.

Wide range of material upgrades including stainless and polymer corrosive resistant designs.

Hysteresis clutches with potential ranges as high as 135"/lb of torque control.

Rear clamping belt control for round containers.

Thickest plates in the industry. Maintains integrity over decades of use.

Below cabinet gear mount.

We are determined to provide the best US custom made rotary capper on the market, and available at a fair and reasonable cost to our customers. Discover why so many potential clients select our cappers and consequently have made them our top sellers, year after year. There is no better option for incorporating into a USB monoblock. One supplier - one great combination.

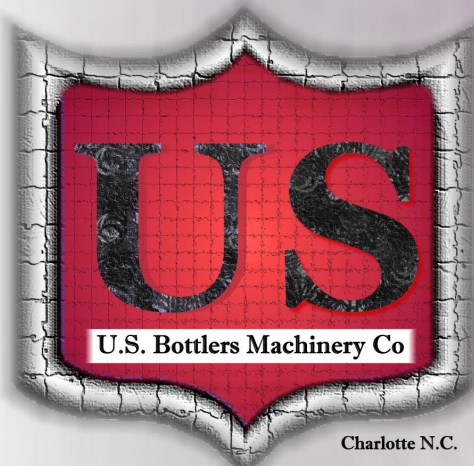


U  
S  
B  
  
C  
A  
P  
P  
E  
R

Model Designation	Capper Pitch Diameter	Potential # of Capping Stations	Approximate Floor Dimensions	Approximate Weight	USB Filler Mono PD
RC_ / 14T	14"	4 - 10	40" x 43"	4,000 lbs	N/A
RC_ / 14"	14"	4-10	40" x 43"	4,000 lbs	28" or 42" CW
RC_ / 22"	22"	4-16	64" x 60"	8,000 lbs	44" or 66"
RC_ / 22T	22"	6-16	62" x 66"	8,000 lbs	N/A
RC_ / 26"	26"	8-18	64" x 66"	9,000 lbs	78"
RC_ / 33"	33"	8-24	76" x 80"	10,000 lbs	66"
RC_ / 37.5"	37.5"	12-30	81" x 81"	18,000 lbs	100"
RC_ / 40"	40"	12-24	77" x 87"	20,000 lbs	40" or 120"
<b>* HC Series</b>	<b>Variable</b>	<b>16-30</b>	<b>Variable</b>	<b>15,000 lbs +</b>	<b>Variable</b>

\* See HC Series literature for details

above for reference purposes only...actual dimensions/wts may vary.



Charlotte N.C.

## Customer Care

After Hours  
Service:

**24/7**

704-588-4750 Ext 200

**Overcapper**  
For press-on, snap-over, and insertion plug applications.

100 years strong

QUICK CHANGEOVER  
CORROSION RESISTANT MODELS  
CHEMICAL ACID STYLES  
TANGENTIAL DESIGNS  
HI AND LOW SPEED  
REVERSE DIRECTION CAPABLE  
LONG STROKE OPTION  
STRONG AND DEPENDABLE  
ASK ABOUT TRIGGER TURRETS

AEROSOL CANS  
1 1/4" TO 40" PITCH  
4 TO 30 HEADS  
STRAW INSERTION  
PNEUMATIC OR MECHANICAL CHUCKS  
BOTTLE NO CAP  
ROTTERS

Always invest in quality parts from the  
inventor of your machinery.

**U.S.**  
Genuine  
Parts

704-588-4750  
Charlotte N.C.  
www.usbottlers.com

The above models  
can be made as rotary  
screw on cappers or as  
pluggers, overcappers,  
inserters or ROPP turrets.  
Contact our sales team for  
available size options  
and proper rotational  
speeds. Cap stroke and  
container size will impact  
model options.

Creative Custom Packaging Equipment

Designed, manufactured, and  
serviced with quality and  
integrity for four generations.

Cleaners  
Fillers  
Integration  
Rinsers  
Cappers  
Rebuilds

Over 100 Years of Excellence



# U.S. Bottlers Machinery Co



704-588-4750

11911 Steele Creek Rd  
Charlotte N.C. 28241

[www.usbottlers.com](http://www.usbottlers.com)